



David Geffen  
School of Medicine

# UCLA Aortic Center Symposium: *Advances in Treatment of Aortic Pathology*



**Saturday, November 5, 2016**  
**Tamkin Auditorium**  
**Ronald Reagan UCLA Medical Center**  
**Los Angeles, California**

**CME** OFFICE OF  
CONTINUING  
MEDICAL  
EDUCATION

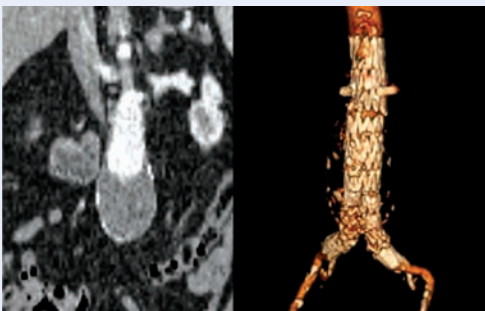
DAVID GEFFEN SCHOOL OF MEDICINE at **UCLA**

## COURSE DESCRIPTION

The UCLA Symposium on Advances in Treatment of Aortic Pathology is sponsored by the UCLA Aortic Center and is a one day self-assessment CME course exploring the advancements in endovascular technology and medical and surgical alternatives available for treatment of aortic disease. It will focus on patient selection, evaluation, imaging, and combined approaches for management and care of patients with aortic pathology. More focused presentations for physicians involved in the management of aortic disease will occur in the afternoon session. A parallel afternoon session for allied health care personnel in particular nurses, nurse practitioners, and physicians assistants will be presented to cover critical information on natural history, patient and family education and preoperative, perioperative, and postoperative management of patients with aortic conditions.

## TARGET AUDIENCE:

The target audience is primary care physicians, vascular surgeons, cardiothoracic surgeons, cardiologists, nurse practitioners, physician's assistants, nurses, and allied health professionals involved in the care of patients with acute and chronic aortic pathology.



## COURSE OBJECTIVES:

The objectives of the symposium are to educate physicians, nurses, nurse practitioners, and allied health professionals on diagnosis and management alternatives available for treatment of complex aortic pathology. Patient selection, indications for intervention, endovascular and surgical options, intra-procedural maneuvers and current and future endovascular device developments will be presented. Prevention, recognition and management of complications will be discussed.

At the conclusion of this activity, participants will be able to:

- Recognize the features in the history examination and evaluation of patients with acute chest pain that may indicate aortic pathology
- Describe the latest advances in imaging of the human aorta
- Identify the features of familial aortic syndromes
- Differentiate between the management of type A and type B aortic dissection
- Cite examples of advancements in endovascular and surgical treatment of aortic pathology
- Formulate a plan for management of malperfusion syndromes
- Identify alternatives in the management of aortic arch pathology
- Choose the most appropriate intervention for management of failed endovascular aneurysm repair
- Explain the advantages and disadvantages of open, endovascular, or hybrid approaches to thoracoabdominal aortic aneurysms
- Describe the natural history of aortic aneurysms and aortic dissection
- Describe methods and alternatives to reduce paraplegia as a complication of endovascular repair of aortic pathology
- Recognize the role and limitations of endovascular alternatives including snorkels and chimneys in the management of aortic pathology
- Identify the symptoms and describe alternatives for management of patients with visceral occlusive aortic syndromes

# Faculty

## COURSE DIRECTOR

### **William Quinoñes-Baldrich, MD**

Professor of Surgery  
Director of UCLA Aortic Center  
Division of Vascular and Endovascular Surgery  
David Geffen School of Medicine at UCLA

## GUEST FACULTY

### **Ronald M. Fairman, MD**

President-Elect, Society for Vascular Surgery  
The Clyde F. Barker - William Maul Measey  
Professor of Surgery  
Chief, Division of Vascular Surgery and  
Endovascular Therapy  
Vice-Chairman for Clinical Affairs, Department  
of Surgery  
Professor of Surgery in Radiology  
University of Pennsylvania

### **Jason T. Lee, M.D.**

Professor of Surgery  
Vascular Surgery  
Stanford University

### **Jean M. Panneton, MD, FRCSC, FACS**

Professor of Surgery  
Chief and Program Director  
Division of Vascular Surgery  
Eastern Virginia Medical School

### **Benjamin Starnes, MD, FACS**

Professor of Surgery  
Chief, Division of Vascular Surgery  
University of Washington School of Medicine

### **Fred A. Weaver, MD, MMM**

Professor of Surgery  
Chief, Division of Vascular Surgery &  
Endovascular Therapy  
Chief, Vascular Surgery, Keck School of Medicine

## UCLA FACULTY

### **Jamil Aboulhosn, MD**

Associate Professor of Surgery  
Division of Cardiovascular  
David Geffen School of Medicine at UCLA

### **Donald Baril, MD**

Associate Professor  
Division of Vascular and Endovascular Surgery  
David Geffen School of Medicine at UCLA

### **Anahat Dhillon, MD**

Associate Clinical Professor  
Critical Care Medicine  
Department of Anesthesiology and  
Perioperative Medicine  
Ronald Reagan UCLA Medical Center

### **Charlene Earnhardt, MSN, GCNS-BC**

UCLA Cardiothoracic Surgery Intensive Care Unit  
Ronald Reagan UCLA Medical Center

### **Vadim Gudzenko, MD**

Anesthesiologist  
Ronald Reagan UCLA Medical Center

### **Jeanne Huchting, BSN, ACNP**

UCLA Aortic Center and Valve Programs  
Ronald Reagan UCLA Medical Center

### **Juan Carlos Jimenez, MD**

Associate Professor of Surgery  
Division of Vascular and Endovascular Surgery  
David Geffen School of Medicine at UCLA

### **Murray Kwon, MD**

Assistant Clinical Professor of Cardiac Surgery  
Division of Cardiothoracic Surgery  
David Geffen School of Medicine at UCLA

### **John Moriarty, MD**

Assistant Clinic Professor  
Division of Radiological Sciences  
David Geffen School of Medicine at UCLA

### **Mark Morocco, MD**

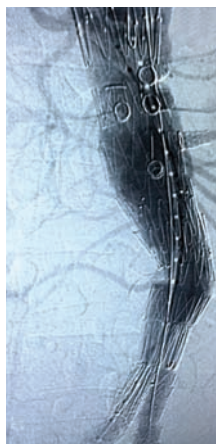
Clinical Professor  
Department of Emergency Medicine, UCLA  
David Geffen School of Medicine at UCLA

### **Kamran Shamsa, MD**

Assistant Professor  
Division of Cardiology  
David Geffen School of Medicine at UCLA

### **Carl Wherry, NP**

Neurological Surgery  
Ronald Reagan UCLA Medical Center



# Program

7:00-7:50	<b>Registration and Breakfast</b>
7:50-8:00	<b>Welcome and Introduction</b>
8:00-8:15	<b>Pre-test</b>
8:15-8:30	<b>Acute Chest Pain – History, Examination and Evaluation for Timely Diagnosis and Treatment</b> <i>Mark Morocco, MD</i>
8:30-8:45	<b>Advances in Imaging of the Human Aorta</b> <i>John Moriarty, MD</i>
8:45-9:00	<b>Medical Management of Aortic Pathology in 2016</b> <i>Kamran Shamsa, MD</i>
9:00-9:15	<b>Familial Aortic Syndromes</b> <i>Jamil Aboulhosn, MD</i>
9:15-9:30	<b>Diagnosis and Management of Type A Aortic Dissection</b> <i>Murray Kwon, MD</i>
9:30-9:45	<b>Contemporary Management of Acute Type B Aortic Dissection</b> <i>William Quinoñes-Baldrich, MD</i>
9:45-10:00	<b>Questions and Discussion</b>
10:00-10:25	<b>Break</b>
10:25-10:30	<b>Introduction Keynote Speaker</b> <i>William Quinoñes-Baldrich, MD</i>
10:30-11:00	<b>Aortic Endovascular Update – Where We Are and Where We Are Going</b> <i>Ronald Fairman, MD</i>
11:00-11:15	<b>Endovascular Repair of Aortic Arch Pathology</b> <i>Jean Panneton, MD</i>
11:15-11:30	<b>Recognition and Optimal Management of Malperfusion Syndromes in Aortic Dissection</b> <i>Donald Baril, MD</i>
11:30-11:45	<b>Blunt Aortic Injury- A Call for a New Classifications System</b> <i>Benjamin Starnes, MD</i>
11:45-12:15	<b>Complex Case Presentations: Challenging Cases for the Experts</b>
12:15-1:15	<b>Lunch</b>
1:15-1:30	<b>Salvage Techniques after Failed EVAR</b> <i>Juan Carlos Jimenez, MD</i>
1:30-1:45	<b>Secondary Interventions after TEVAR</b> <i>Jason Lee, MD</i>
1:45-2:00	<b>Current Approach to Repair Thoraco-abdominal Aortic Aneurysms With or Without Dissection: Open, Endovascular or Hybrid</b> <i>Fred Weaver, MD</i>

2:00-2:15	<b>Ascending Aortic Endovascular Devices – Present and Future</b> <i>Jean Panneton, MD</i>
2:15-2:30	<b>Visceral Occlusive Aortic Syndromes</b> <i>William Quinoñes-Baldrich, MD</i>
2:30-2:45	<b>Endovascular Techniques Available Today for Treatment of Complex Aortic Pathology – Snorkels and Chimneys</b> <i>Jason Lee, MD</i>
2:45-3:00	<b>Fenestrated Endovascular Aneurysm Repair – What it Takes to be a Master</b> <i>Benjamin Starnes, MD</i>
3:00-3:15	<b>Endovascular Technology in the Works and Feasibility Trials</b> <i>Ronald Fairman, MD</i>
3:15-3:45	<b>Panel Discussion</b>
3:45-4:00	<b>Post-test</b>
4:00	<b>Adjourn</b>

---

### Concurrent Session for Nurses and Allied Health Professionals

1:15-1:30	<b>Aortic Pathology</b> <i>Murray Kwon, MD</i>
1:30-1:45	<b>The Natural History of Aortic Aneurysms and Dissection</b> <i>William J. Quinones-Baldrich, MD</i>
1:45-2:00	<b>Management of Preoperative Risk Factors in a Patient Going for Aortic Surgery</b> <i>Anahat Dhillon, MD</i>
2:00-2:30	<b>Lumbar Drain Management in Patients Going for Aortic Intervention</b> <i>Carl Wherry, NP</i>
2:30-2:45	<b>Diagnosis and Management of Neurologic Complications after Aortic Interventions</b> <i>Vadim Gudzenko, MD</i>
2:45-3:00	<b>Education of the Patient and Family with an Aortic Pathology</b> <i>Charlene Earnhardt, MSN, GCNS-BC</i>
3:00-3:15	<b>Proper Follow-Up and Care of the Patient after Endovascular vs. Surgical Repair of Aortic Pathology</b> <i>Jeanne Huchting, BSN, ACNP</i>
3:15-3:45	<b>Question and Answer Session</b>
3:45	<b>Adjourn</b>

# General Information

## Conference Location

Tamkin Auditorium  
Ronald Reagan UCLA Medical Center  
757 Westwood Plaza  
Los Angeles, CA 90095

## Directions and Parking

From the 405 freeway, exit Wilshire Blvd., East toward Westwood. Turn left on Westwood Blvd., travel past Charles E. Young Dr. South and turn left on Structure 8 driveway. Drive up the ramp to the rooftop level to park. Attendants will be selling permits from 6:30 - 8:30a. If you arrive outside of this time frame, please visit the parking kiosk on Westwood Plaza to pay for your permit. Participants are responsible for their own parking charges at a rate of \$12 per vehicle. The Ronald Reagan UCLA Medical Center is located on the corner of Westwood Plaza and Charles E. Young Dr. South.

## Accommodations

Several hotels are located within walking distance of the course venue.

### The W Hotel

930 Hilgard Avenue  
Los Angeles, CA 90024  
(310) 208-8765

### Hotel Palomar

10740 Wilshire Boulevard  
Los Angeles, CA 90024  
(310) 475-8711

### Hilgard House

927 Hilgard Avenue  
Los Angeles, CA 90024  
(310) 208-3945

## Fees

\$75 – Physicians  
\$50 – Nurse Practitioners and Nurses

\* Fellows, residents and students are welcomed at no charge

## Refunds

Cancellations must be received in writing by Thursday, October 13, 2016 and will be subject to a \$50 processing fee. No refunds will be granted after that date. If, for any reason, the course must be cancelled, discontinued or rescheduled by the Office of Continuing Medical Education, a full refund will be provided.

## Additional Information

If you have any questions, please contact the UCLA Office of Continuing Medical Education at 310-794-2620.

## Enrollment

### By Mail

Use the form attached. Mail to the UCLA Office of Continuing Medical Education, David Geffen School of Medicine at UCLA, UCLA Symposium on Aortic Disease, 10920 Wilshire Blvd., Ste. 1060, Los Angeles, CA 90024-6512

### Online

Go to [www.cme.ucla.edu/courses](http://www.cme.ucla.edu/courses), click on UCLA Symposium on Aortic Disease, and click on the registration button. You may use your MasterCard, VISA, American Express or Discover card to register online.

### By Phone

Use your American Express, MasterCard, VISA or Discover card.

Call (310) 794-2620.

Email address: [eayala@mednet.ucla.edu](mailto:eayala@mednet.ucla.edu)

### By FAX

Send the completed enrollment form with credit card information and authorizing signature.

Fax (310) 794-2624

## Accreditation

The Office of Continuing Medical Education, David Geffen School of Medicine at UCLA is accredited by the Accreditation Council for Continuing Medical Education to provide continuing medical education for physicians.

The Office of Continuing Medical Education, David Geffen School of Medicine at UCLA designates this live activity for a maximum of 6.5 *AMA PRA Category 1 Credits™*. Physicians should claim only credit commensurate with the extent of their participation in the activity.

Provider approved by the California Board of Registered Nursing.

## Disclosure Statement

The FDA has issued a concept paper which classifies commercial support of scientific and educational programs as promotional unless it can be affirmed that the program is “truly independent” and free of commercial influence. In addition to independence, the FDA requires that nonpromotional, commercially supported education be objective, balanced, and scientifically rigorous. The policy further states that all potential conflicts of interest of the CME staff and faculty be fully disclosed to the program’s participants. In addition, Accreditation Council for Continuing Medical Education policy now mandates that the provider adequately manages all identified potential conflicts of interest prior to the program. We at UCLA fully endorse the letter and spirit of these concepts.

# UCLA Aortic Center Symposium

## Application for Enrollment

Course Title and Number	Amount
<b>UCLA Aortic Center Symposium: Advances in Treatment of Aortic Pathology</b>	\$

*Please print*

\_\_\_\_\_  
Last four digits of your Social Security Number

\_\_\_\_\_  
Name (First/Middle/Last)

Male

Female

\_\_\_\_\_  
Degree

\_\_\_\_\_  
Specialty

\_\_\_\_\_  
Mailing Address

\_\_\_\_\_  
City/State/ZIP

(\_\_\_\_\_) \_\_\_\_\_

Area Code

Daytime Phone

(\_\_\_\_\_) \_\_\_\_\_

Area Code FAX

\_\_\_\_\_  
E-mail

Request vegetarian lunch

Check enclosed payable to: The Regents of the University of California

Charge:  MasterCard  Visa  American Express  Discover

\_\_\_\_\_  
Authorizing Signature

\_\_\_\_\_  
Expiration (Mo/Yr)

\_\_\_\_\_  
Name of cardholder

Fax with credit card and expiration date directly to our office at (310) 794-2624, or  
Mail to: Office of Continuing Medical Education, David Geffen School of Medicine at UCLA,  
UCLA Aortic Center Symposium, 10920 Wilshire Blvd., Suite 1060,  
Los Angeles, CA 90024-6512.

Please visit our website for other UCLA CME offerings at [www.cme.ucla.edu](http://www.cme.ucla.edu)

**UCLA Office of Continuing Medical Education**  
David Geffen School of Medicine at UCLA  
405 Hilgard Avenue MC 29  
Los Angeles, California 90095-6938

Non-Profit Org.  
U.S. Postage  
**PAID**  
UCLA

# **UCLA Aortic Center**

## **Symposium:**

### ***Advances in Treatment of Aortic Pathology***

**Saturday, November 5, 2016**

Tamkin Auditorium

Ronald Reagan UCLA Medical Center

Los Angeles, California